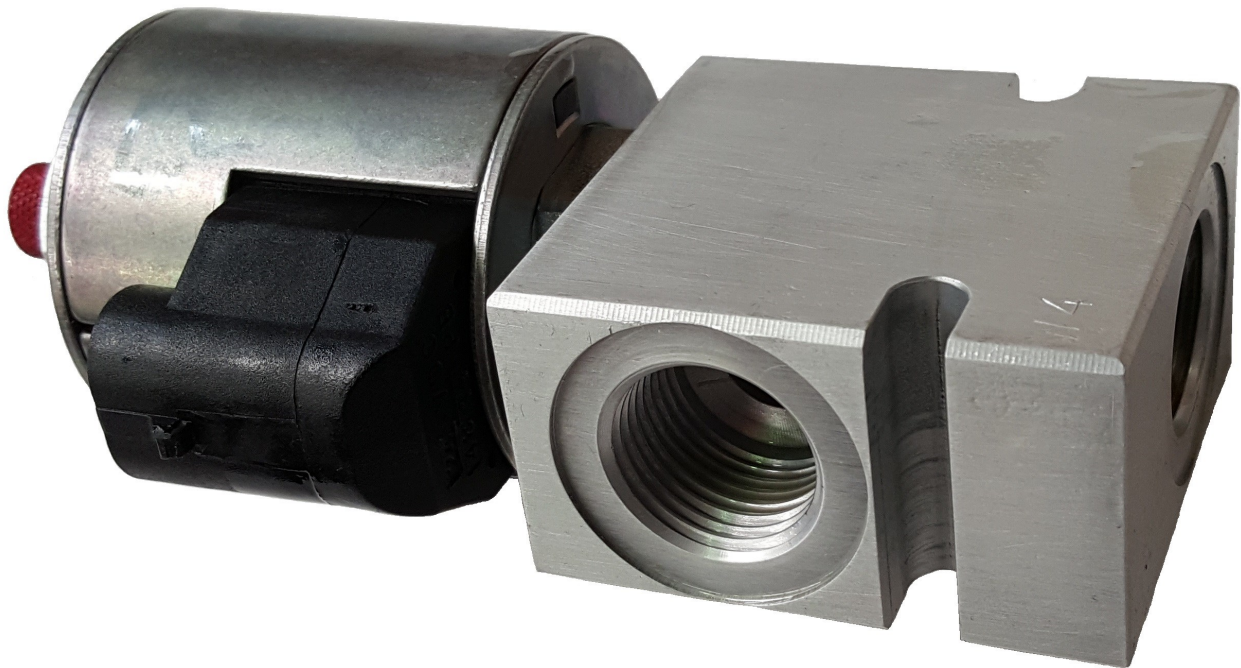


Technical Data Sheet



SV10 LOAD HOLDING SAFETY VALVES

The SV10 series valve is a solenoid operated, 2 way, normally closed, piloted poppet-type, screw-in hydraulic cartridge valve, for blocking or load holding in applications requiring low internal leakage.

The cartridge is made from steel with hardened work surfaces with zinc plated exposed surfaces. The ported body is from anodised high strength 6061 T6 aluminium alloy.

The coil is a fully encapsulated design with a rugged external metal shell, rated to IP69K with integral connectors.

Product Features

- **Poppet Style Construction**
For secure use in load holding applications.
- **Hardened Seat**
For low leakage and long life to provide reliable operation in mobile machinery.
- **Manual Override**
For total control over the application in all conditions.
- **IP69K Continuous Duty Rated Coil**
For long term use under all conditions.
- **Industry Common Cavity Block**
Easy manifold matching using standard tooling.

POWAUTO

DAVID BROWN
HYDRAULICS

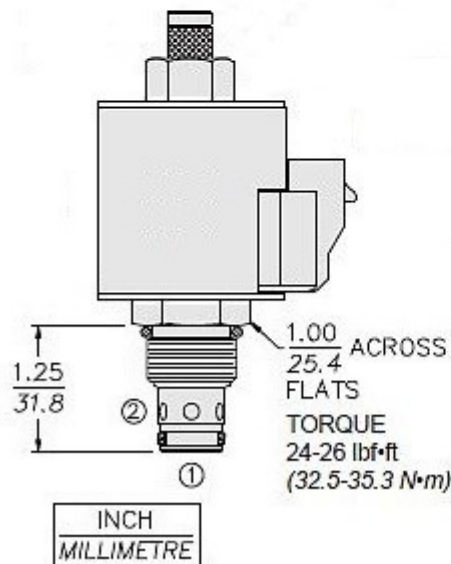
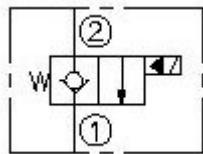
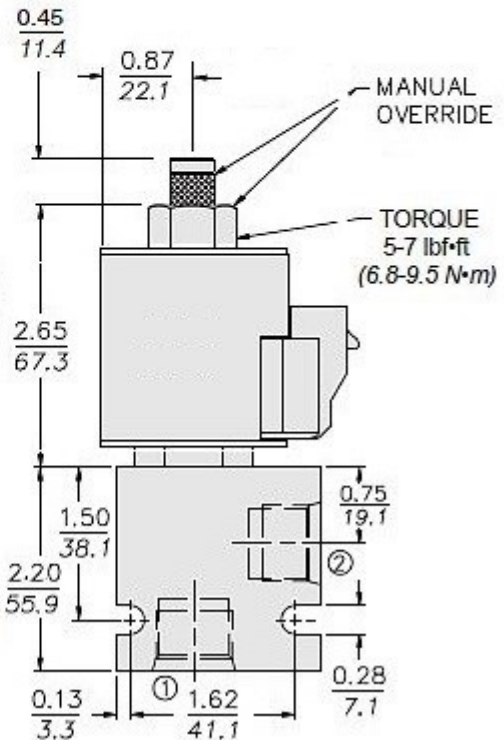
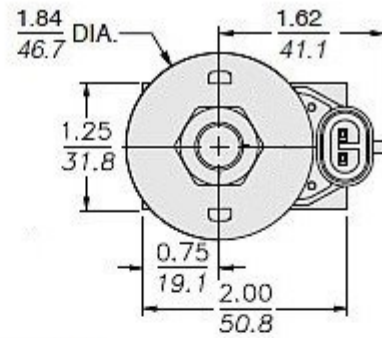
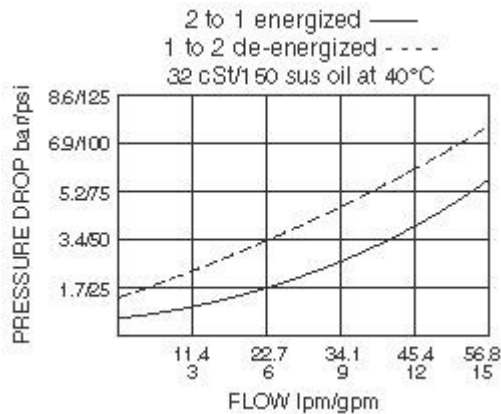
HYDRECO®

HYDRECO
POWAUTO
ADVANCED HYDRAULIC TECHNOLOGIES



www.hydreco.com

Technical Data Sheet



Technical Specifications		12V	SVI0-20M4BN12EYA
		24V	SVI0-20M4BN24EYA
Flow Rate	L/min		56.8
Max Working Pressure	Bar/psi		207 / 3000
Internal Leakage	cc/min		0.15
Weight - Coil	kg		0.41
Weight - Cartridge	kg		0.17
Weight - Body	kg		0.16
Filtration	ISO Code		18/16/13
Viscosity	cSt		7.4 to 420
Ports	BSP		1/2"

Operation

When de-energised, the SVI0 acts as a check valve, allowing flow from 1 to 2, while blocking flow from 2 to 1.

When energised, the cartridge's poppet lifts to open the 2 to 1 flow path.

Manual override

To override, push button in, twist counterclockwise 180°.

Doc: SVI0—08/18

POWAUTO

DAVID BROWN
HYDRAULICS

HYDRECO®

HYDRECO
POWAUTO

ADVANCED HYDRAULIC TECHNOLOGIES



www.hydreco.com