

# Technical Data Sheet



## 86 SERIES DIVERTER VALVES

## Product Features

### Three Way—Two Position Diverter Valve

The 86 Series valve is used to direct oil flow from between two hydraulic applications.

This valve is used extensively in “truck and dog” applications for tipping both the front and rear trailers.

Use this valve in conjunction with a dual control (e.g. CK113 or CK114).

#### Suits:

Truck and trailer applications  
Winch and hoist applications

- **Hard Chrome Spools**  
For longer duty and life.
- **Large Ports and Spool Passages**  
Providing maximum flow with minimum loss of pressure through the valve.
- **Simple Design**  
For trouble free installation and operation.

POWAUTO

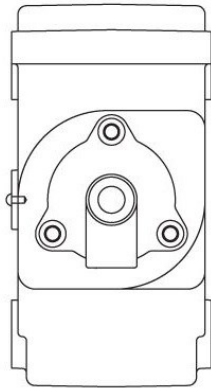
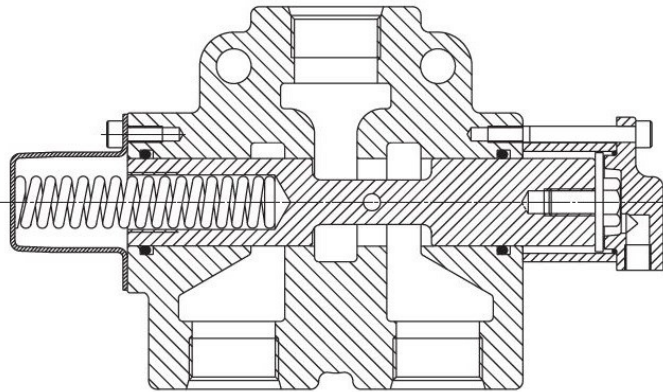
DAVID BROWN  
HYDRAULICS

HYDRECO

**HYDRECO**  
**POWAUTO**  
HYDRAULIC SOLUTIONS PROVIDER

[www.hydreco.com](http://www.hydreco.com)

# Technical Data Sheet



For Full details refer to the owners manual.

## VALVE DESIGNATION CODES

86 series valve

**Identifier**  
VA = Valve

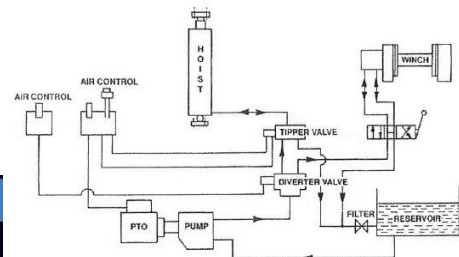
**Valve Series**  
86

**Engagement Type**

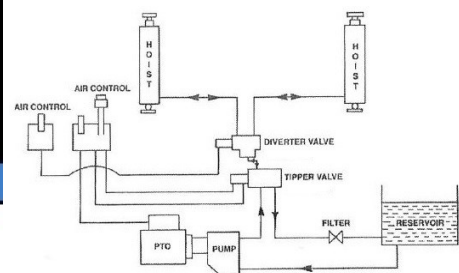
A = Air  
C = Cable  
K = Knob

VA 86 A

## Hoist & Winch System Diagram



## Dual Hoist System Diagram



Technical Specifications		VA86A
Flow	Lpm / gpm	189 / 50
Working Pressure	Bar / psi	172 / 2500
Bare Mass - VA86A	kg	7.8
Bare Mass - VA86C	kg	7.1
Port Sizes		1 5/16" -12 UN O-Ring
Seal Kit		SK050

**For Full Details Refer To Your Hydreco Distributor**

Note: Hydreco recommends the use of filtration in all hydraulic circuits to a maximum of 25µ.

**DISTRIBUTOR:**

Doc: VA86—02/17

POWAUTO

DAVID BROWN  
HYDRAULICS

HYDRECO

**HYDRECO**  
**POWAUTO**  
HYDRAULIC SOLUTIONS PROVIDER

[www.hydreco.com](http://www.hydreco.com)