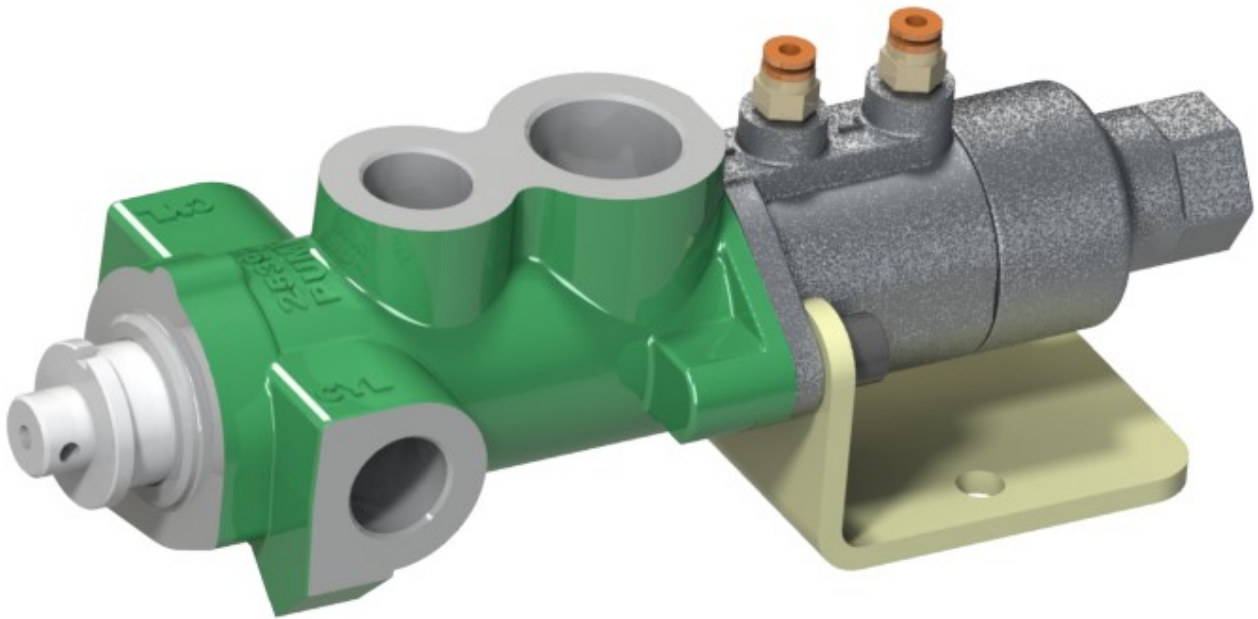


Technical Data Sheet



84 SERIES HYDRAULIC HOIST VALVE

Air Controlled Three Position Hydraulic Spool Valve With Optional Dampening

The 84 Series valve is a bracket mounted, pressure balanced single spool valve for control on hoist tipping applications.

Used in conjunction with a proportional air control (e.g. CK90A) the valve controls the rate of lowering when the dampened model (see over) is ordered.

Suits:

Truck hoist applications
Truck and trailer applications

Product Features

- **Hard Chrome Spools**
For longer life under harsh conditions.
- **Superfine Spool and Housing Tolerances**
Providing minimum loss of pressure through the valve to give higher flow rates.
- **Dampened Valve Option**
Allows for fine control during slow lowering.
- **Fully Adjustable Relief Pressure Settings**
Simple adjustment procedure to set relief pressures between 70 Bar and 210 Bar (1000—3000 psi) and between 120 Bar and 210 Bar (1700 - 3000 psi).

POW AUTO

DAVID BROWN
HYDRAULICS

HYDRECO®

HYDRECO
POW AUTO

ADVANCED HYDRAULIC TECHNOLOGIES



www.hydreco.com

Technical Data Sheet

VALVE DESIGNATION CODES

84 series valve

VA 84 A 1221 A UN

Identifier

VA = Valve

Valve Series

84

Engagement Type

A = Air

Relief Pressure Range (Bar)

0721 = 70 - 210 (1000 - 3000psi)

1221 = 120 - 210 (1700 - 3000psi)

Dampening

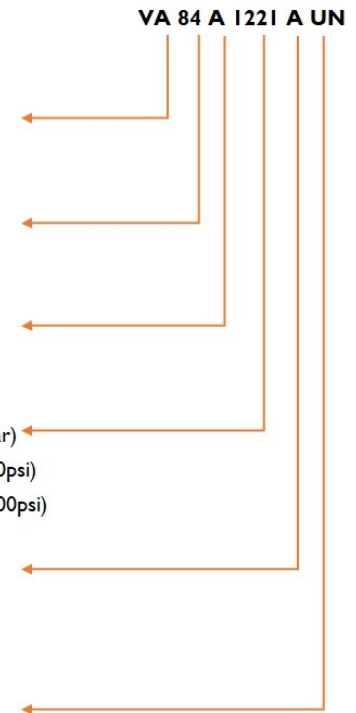
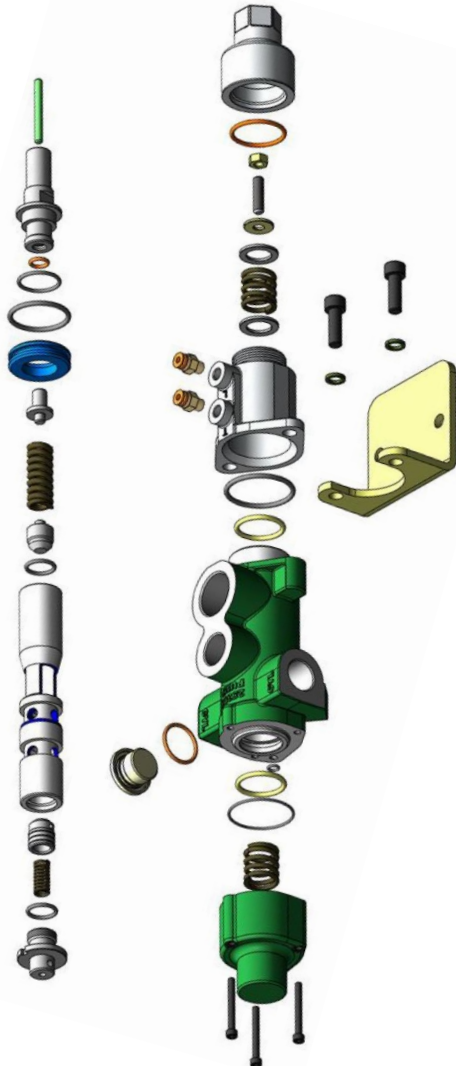
A = No

B = Yes

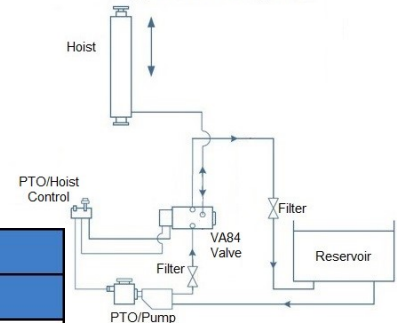
Port Type

UN = UNO

G = BSPP



Typical Flow Diagram



| Technical Specifications | | UNO | BSPP |
|--------------------------|---|--------------|--------|
| Port Size | Pump | 1 1/16" - 12 | G 3/4" |
| | Cylinder | 1 1/16" - 12 | G 3/4" |
| | Tank | 1 5/16" - 12 | G 1" |
| Flow | The pressure differential in the raise position is 780 kPa (113 psi) at 150 L/min (40US gpm) flow rate. The pressure differential in the lower or dump position is 480 kPa (70 psi) at 225 L/min (60US gpm) flow rate. | | |
| Pressure | Maximum working pressure is 210 Bar (3000 psi). Relief valve is adjustable down to 70 Bar (1000 psi). | | |
| Approximate Bare Mass | 5.1 kg / 11.2 lb | | |
| Seal Kit | SK109 | | |

Note: Hydreco recommends the use of filtration in all hydraulic circuits to a maximum of 25µ

Doc: VA84—05/19

POW AUTO

DAVID BROWN
HYDRAULICS

HYDRECO®

HYDRECO
POW AUTO

ADVANCED HYDRAULIC TECHNOLOGIES



www.hydreco.com