

# Technical Data Sheet



## P SERIES PISTON PUMP

## Product Features

### High Pressure Bent Axis Piston Pump

The P series pump is ideal for applications requiring high pressures with confined spaces. The design is maximised for performance and flow.

Manufactured with a high strength alloy housing, this pump is designed for equipment such as cranes, aerial platforms, hook-lift loaders and compactors. The 40° axis shift allows for installations in compact spaces.

Compatible with similar "Industry Standard" bent axis piston pumps.

- **High Pressure**  
Maximum performance of hydraulic systems.
- **Rear Ports**  
Easier placement of hydraulic lines.
- **Versatile Positioning**  
Can be placed in any one of four orientations.
- **Low Weight**  
Ease of installation and maintenance.
- **Double Shaft Seals**  
Ensures leakproof operation.
- **Ease Of Rotation Change**  
Simple alternate rotation selection.

POWAUTO

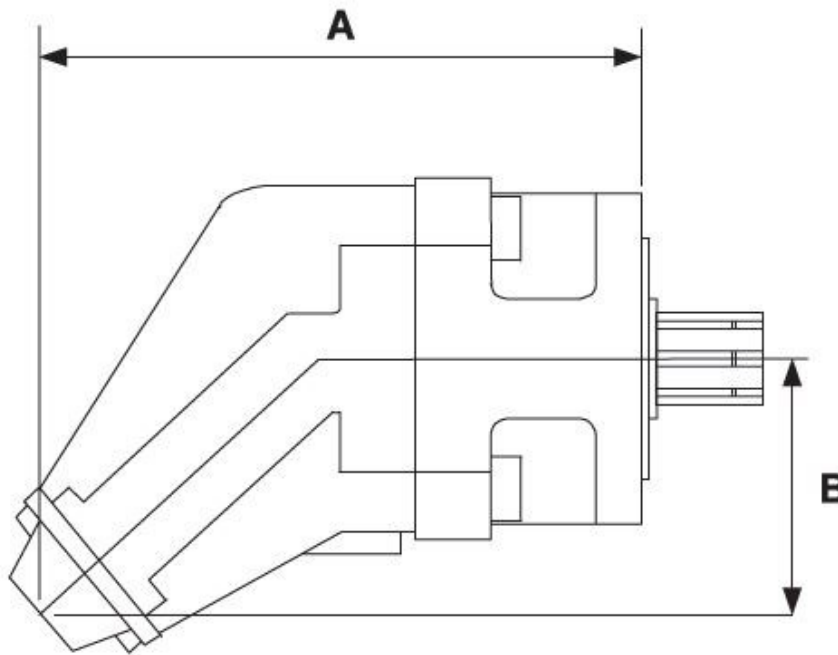
DAVID BROWN  
HYDRAULICS

HYDRECO

**HYDRECO**  
**POWAUTO**  
HYDRAULIC SOLUTIONS PROVIDER

[www.hydreco.com](http://www.hydreco.com)

# Technical Data Sheet



## PUMP DESIGNATION CODES

### P Series

**Identifier**  
PU = Pump

**Pump Series**  
P = Piston Pump

**Rotation**  
O = Opposite To Engine  
S = Same As Engine

**Flow @ 1000 RPM**  
30 = 32 L/min  
40 = 42 L/min  
50 = 50 L/min  
63 = 63 L/min  
81 = 81 L/min  
108 = 108 L/min

**Porting**  
R = Rear

**Input Mounting**  
Omit = "08" Powauto  
01 = DIN 5462

P U P O 50 R 01

Technical Specifications		Pump Size					
Pump Ratings		30	40	50	63	81	108
Displacement Range cm <sup>3</sup> /rev		32.0	42.0	50.0	60.0	80.0	108.0
Pressure Ratings							
Rated Pressure	bar	350	350	350	350	350	350
	psi	5000	5000	5000	5000	5000	5000
Peak Pressure	bar	400	400	400	400	400	400
	psi	5700	5700	5700	5700	5700	5700
Operating Speeds							
	Min. Operational	200	200	200	200	200	200
	Max. Continuous	2300	2300	2300	2000	1800	1600
Pump Port Sizes	Inlet	1" BSPP				1¼" BSPP	1½" BSPP
	Outlet	¾" BSPP				1" BSPP	
Approx. Bare Mass	kg	9.7	9.9	10.0	10.5	13.0	13.4
Length 'A'	mm	235				252	
Height 'B'	mm	85				107	
Seal Kit		SKP30R or SKP63R01				SKP81R01	

**Important** Ensure the pump has been filled with oil prior to installation/startup.

**DISTRIBUTOR:**

POWAUTO

DAVID BROWN  
HYDRAULICS

HYDRECO

**HYDRECO**  
**POWAUTO**  
HYDRAULIC SOLUTIONS PROVIDER

Doc: PUP—06/17

[www.hydreco.com](http://www.hydreco.com)