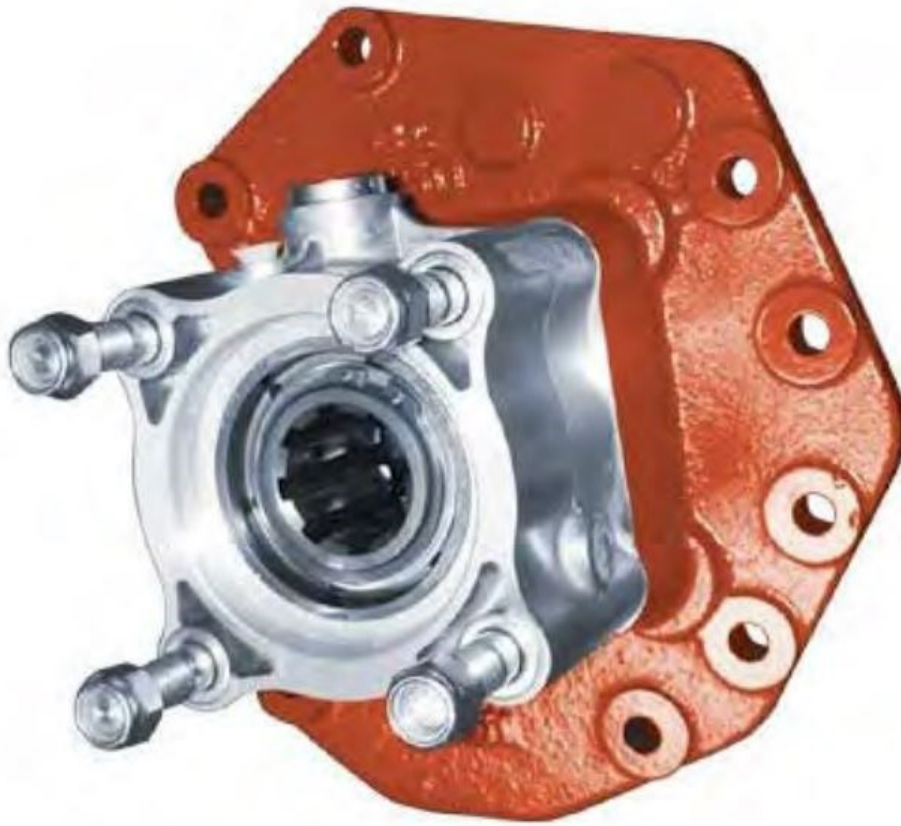


Technical Data Sheet



PB451 SERIES POWER TAKE-OFF

Rear Mount PTO for Mercedes Benz

The 451 series is designed for certain Mercedes Benz transmissions with rear openings, it has a straight through output for extra torque in critical applications.

Continuing Hydreco Powauto's commitment to maximum torque output this PTO's design has higher specifications than most similar competing PTO's.

Suits:

Mercedes Benz G131, G210, G211, G230, G231, G240, G241, G260, G280, G281 and G330 transmissions.
(Refer to the eGuide Configurator on www.hydreco.com for confirmation and details)

Product Features

- **Output Speeds up to 150% of Engine Speed (Transmission Dependant)**
Provides extra torque for normal engine speed.
- **Standard Outputs**
For flexibility in applications
- **Non Standard Rear Mount**
Suits certain Mercedes Benz transmissions.
- **Deep Groove Ball Bearings on Output Shaft**
For longer life and higher performance.
- **Straight Through Output**
Fewer moving parts for greater reliability and higher torque.

POWAUTO

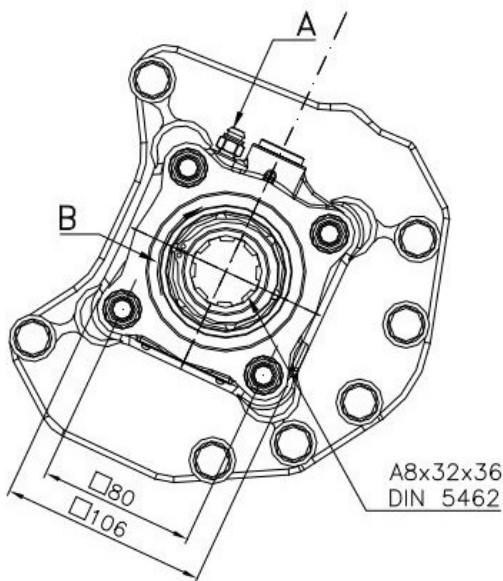
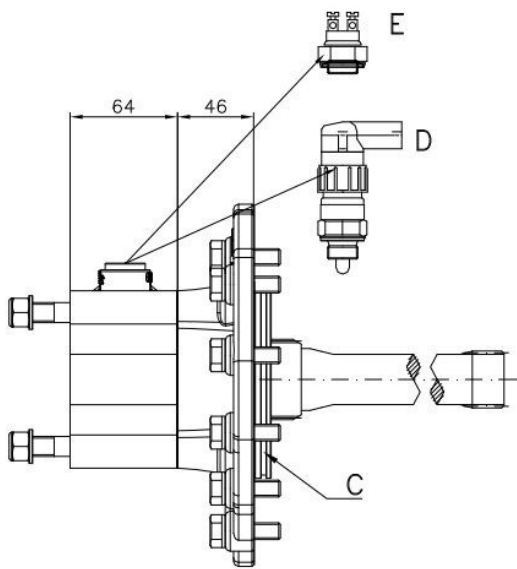
DAVID BROWN
HYDRAULICS

HYDRECO

HYDRECO
POWAUTO
HYDRAULIC SOLUTIONS PROVIDER

www.hydreco.com

Technical Data Sheet



PTO DESIGNATION CODES

451 Series

Identifier

PB = PTO Rear Mount

PTO Series

451

Engagement Type

A = Air

Output Type

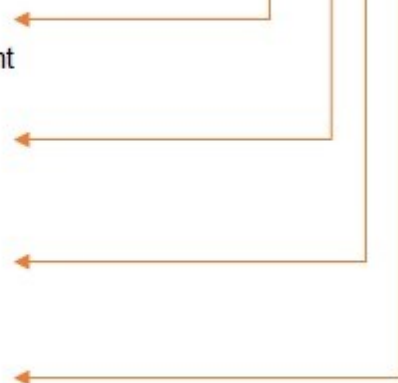
08 = 8T Powauto Hydraulic Spline

11 = 14T 12/24 30° Spline + 1410 Flange

13 = 13T SAE B Hydraulic Spline + SAE B Pump Mount

23 = 8T Ø36 DIN 5462 Spline - Female and DIN Mount

PB 451 A 23



Technical Specifications		
Ratings		
Torque	Nm / ft.lb	700 / 517
Power @ 500 rpm	kW / hp	36.5 / 49.0
Power @ 1000 rpm	kW / hp	73.0 / 98.0
Output Shaft Rotation		Opposite to Engine
Approximate Bare Mass	kg / lb	11.0 / 24.2
Mounting Kit		Included

Note: For full details refer to the owners manual or the eGuide configurator found at www.hydreco.com/markets/transport

DISTRIBUTOR:

Doc: PB451—03/17

POWAUTO

DAVID BROWN
HYDRAULICS

HYDRECO

HYDRECO
POWAUTO
HYDRAULIC SOLUTIONS PROVIDER

www.hydreco.com